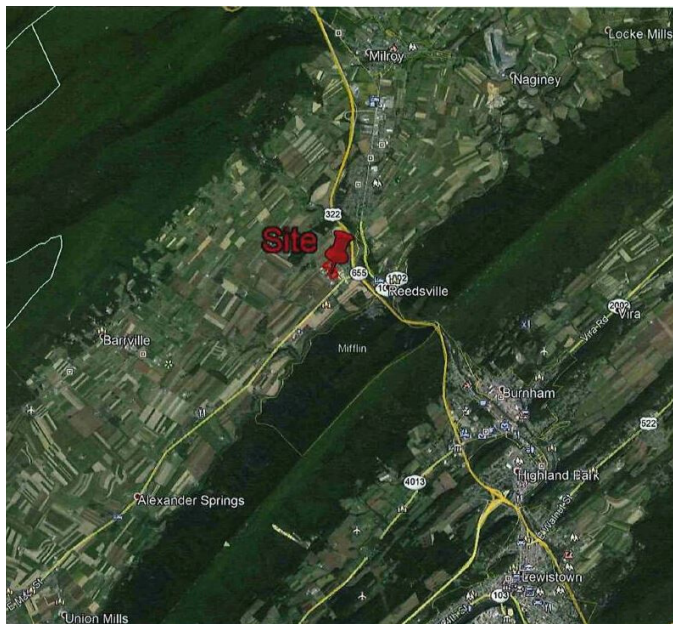


# TEE CREEK

3 LOTS AVAILABLE



## EASY ACCESS FROM SR 322

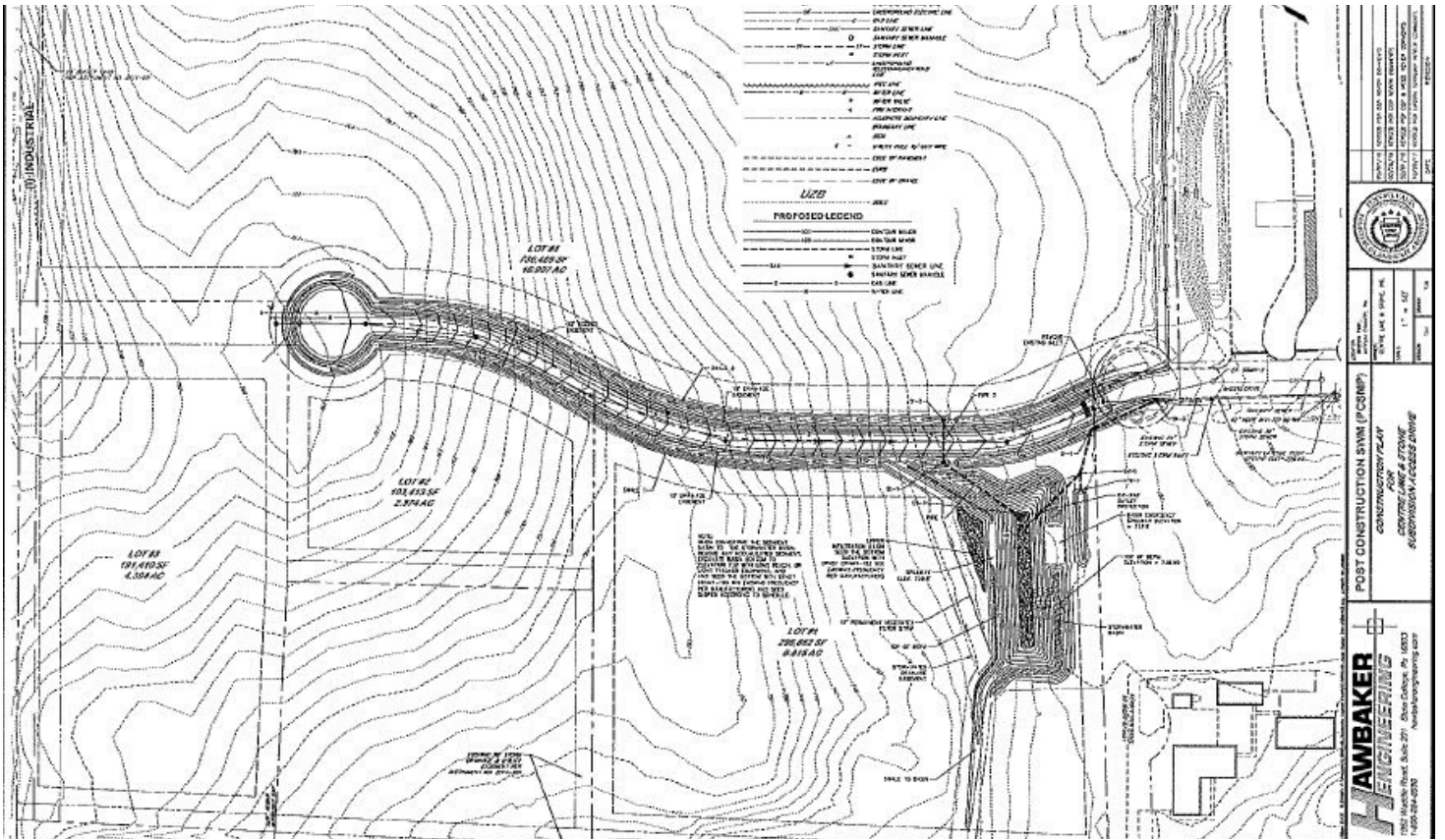


### ADDITIONAL INFORMATION

- 1/4 mile off of Route 322 at the end of Sheetz Drive
- Public sewer and water to the lots. Natural gas is available on Route 655
- Property is in Brown Township and zoned Industrial (I). In addition to industrial uses, this district allows office and several commercial uses.

**Carl Bankert: (814) 574-8028**

## SITE PLAN



## PRICING

- Lot #1--\$460,000; 6.81 AC
- Lot #2--\$191,000; 2.73 AC
- Lot #3--\$296,000; 4.39 AC