

Office Space

FOR LEASE

50 INDUSTRIAL PARK ROAD

22,688 SQUARE FEET

LEWISTOWN, PENNSYLVANIA | MIFFLIN COUNTY



PROPERTY HIGHLIGHTS

- +
- +
- + Industrial Zoning
- + 8'-12' Clear Height in the Office
- +
- +
- + Café and Gym Located Inside of the Building
- + 305 Car-Parking Spaces
- +
- +



PROPERTY PROFILE

22,688 SQUARE FEET

50 INDUSTRIAL PARK RD
Lewistown, PA

ADDRESS:

50 Industrial Park Road
Lewistown, PA
Mifflin County

BUILDING SIZE:

124,700 Square Feet (62,200 SF Warehouse)

OFFICE SIZE: *(Available)*

22,688 Square Feet ←

ASKING PRICE:

Negotiable ←

YEAR BUILT:

2012

BUILDING STRUCTURE:

Metal Panel and Concrete

CLEAR HEIGHT:

8'-12' in the Office

SPRINKLER SYSTEM:

ESFR (2012 Warehouse Addition) & Wet (Remaining)

POWER:

12,500 Amps, 480 Volts, 3 Phase

LIGHTING:

Primarily T-5 and T-8 lighting

GAS:

UGI

WATER:

Public

SEWER:

Public

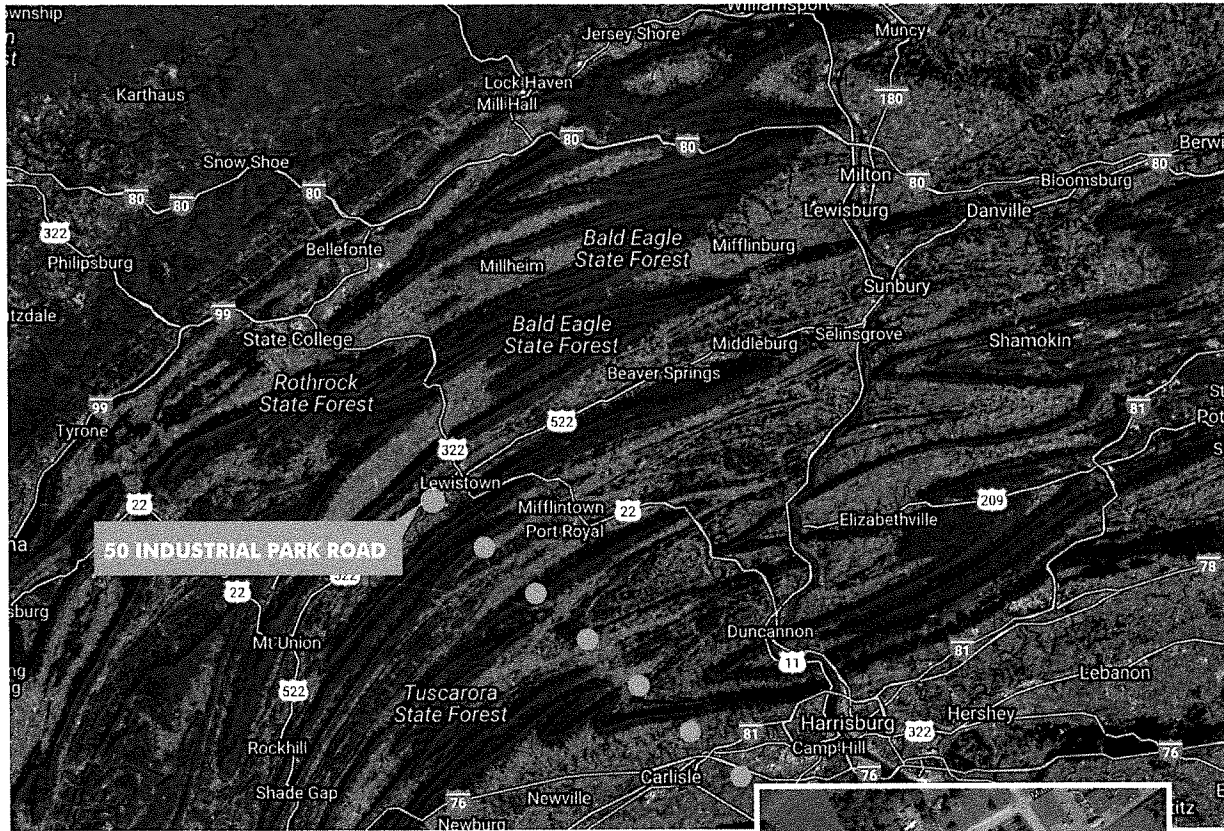
ELECTRICITY PROVIDER:

Penelec



FOR LEASE OFFICE
22,688 SQUARE FEET

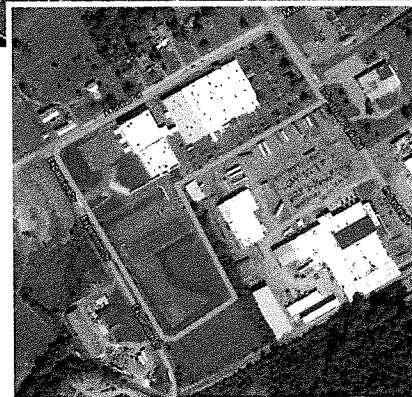
50
INDUSTRIAL PARK RD
Lewistown, PA

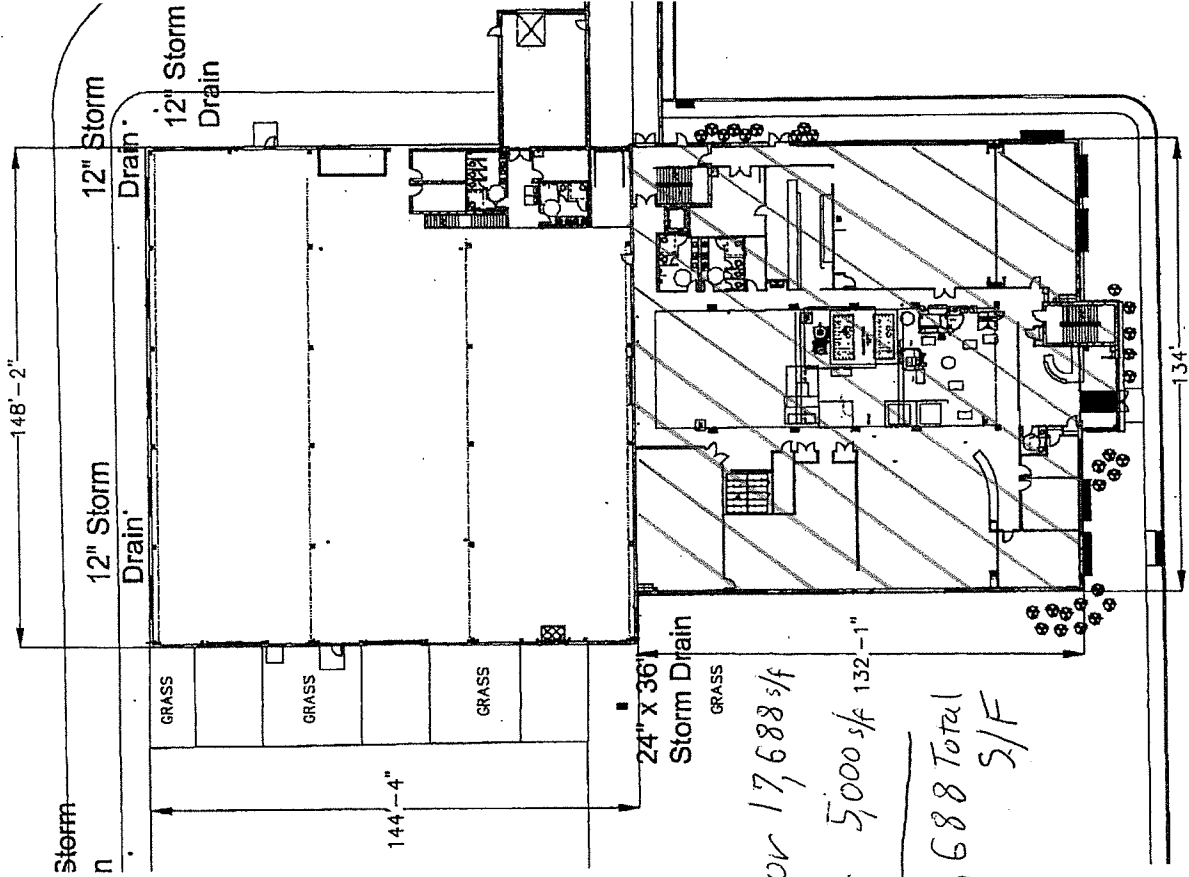


PROPERTY LOCATION

Excellent access to labor and in close proximity to Route 322.

± 60 miles to Harrisburg, Pennsylvania





1st Floor 17,688 s/f
 2nd Floor 5,000 s/f 132'-1"
22,688 Total
 S/F

